

La Línea Infinita

choro

Claudio Ceccoli

Intro

Cm Dm7b5 E \flat Dm7b5 Cm Cm Dm7b5 E \flat Dm7b5



A

Cm/E \flat Ddim B \flat /D \flat C7 Fm/A \flat D7/F \sharp G7/F C7



Fm B \flat 7 E \flat A \flat Am7b5 D7 G7



E \flat Edim Fm E \flat /G B \flat m6 C7 Fm A \flat m6



Dm7b5 G7 Cm B \flat D7 D \flat 7 Cm



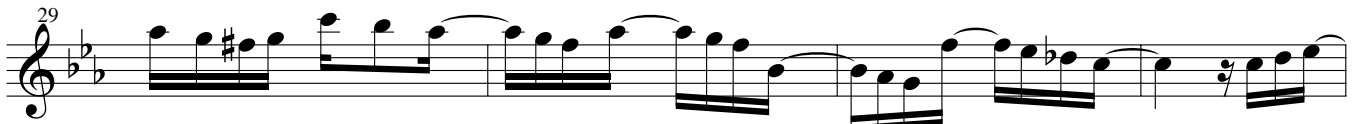
Cm D/C A \flat /C Cm



Cm C7 Fm B \flat 7 E \flat D7 G7



B \flat m7 Gm7b5 C4as B \flat 4as E \flat /G E \flat 9 A \flat



Am7b5 D7 Dm7b5 G7 Cm D7 G7 C7



Guitarra

37 Fm Duo B \flat 7 E \flat D7 Gm A7 D7 Gm

41 B \flat m C7 Fm G7 Cm B \flat D7

45 G7 D7 D \flat 7 Cm *Fine* B \flat /C A \flat /C

50 A \flat /C B Gdim B \flat dim A \flat A \flat /C G7/B C7/B \flat

54 Fm/A \flat G7/F C7/E D \flat /F Cm11 B7

58 B \flat m C7 C/B \flat Fm/A \flat B \flat m6 D \flat C7 Fm

62 Gdim B \flat dim A \flat A \flat /C G7/B C7/B \flat Fm/A \flat

67 Cm7b5 F7 Adim B \flat m B \flat m7 E \flat 7/D \flat A \flat /C E \flat m6

71 Dm6 C7 Fm Fm/E \flat D \flat 7 C7 Fm G7 *D.S. al Fine*

75 D7 D \flat 7 F4as E \flat 7b5 D4as D \flat 7b5 Adim7 Cm6

The image shows a musical score for guitar, consisting of ten staves of music. Each staff begins with a measure number and a set of chords. The music is written in a treble clef with a key signature of two flats (Bb and Eb). The chords are primarily triads and dyads, with some more complex structures like Cm11 and F4as. The melody is composed of eighth and sixteenth notes, often beamed together. There are some special markings, such as a circled 'B' above measure 50 and a circled 'D' above measure 75. The score ends with a double bar line and a fermata over the final chord, Cm6.