

Melodía
y cifrado

De Regreso a las Estrellas

Claudio Ceccoli

Intro

D7(#9) D \flat 7 Cm

Fm6 B \flat 7



E \flat Δ \sharp 5

C7

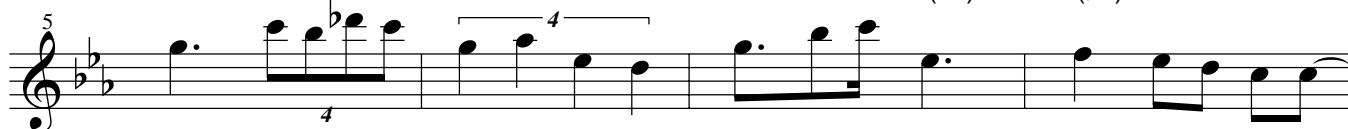
Fm7

B \flat 7

E \flat Δ \sharp 5

A \flat 7(\flat 5)

D7(#9)



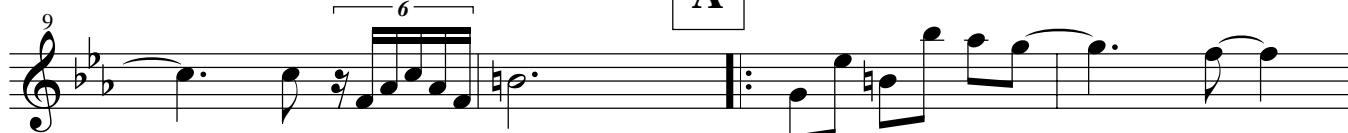
G7sus4

G7

A

Cm Δ

Fm



A \flat m6

E \flat Δ \sharp 5

D \emptyset

D \emptyset /A \flat

E \flat /G

C7 \flat 9



Fm11

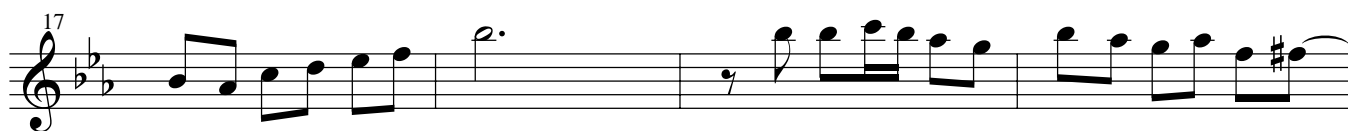
B \circ 7

B \flat m7

E \flat 7 \flat 9

A \flat m6

Bm6



E \flat Δ

G \emptyset /D \flat

C7 \flat 9

Fm

G \emptyset /D \flat

A \flat /C



G/B

A \circ 7

A \flat \circ 7

D7 \flat 9

D \flat 9

Cm11

B7(\flat 5)

B \flat 7sus4

B \flat 7



Interludio

30 B Δ F \sharp /A \sharp G \sharp m7 C \sharp 7sus4 E \flat Δ E \flat Δ \sharp 5

34 B Δ F \sharp /A \sharp G \sharp m C \sharp 7sus4 G7 F \sharp

A'

38 Cm Δ Fm9 G7 C7/B \flat Fm/A \flat

43 E \flat m/G \flat B \flat m/D \flat Cm B \circ 7 B \flat m7 E \flat 7 \flat 9

47 A \flat m6 Bm6 E \flat Δ B \flat m/D \flat C7 \flat 9

51 Fm G \emptyset /D \flat A \flat /C G7/B A \circ 7 A \flat \circ 7 D7 \flat 9 D \flat 9 Cm11 B7(\flat 5)

B

55 B \flat 7sus4 B \circ 7 Cm B \circ 7 G \emptyset /B \flat

